



Austin

AVANCE[®]

2024-2025 ANNUAL REPORT



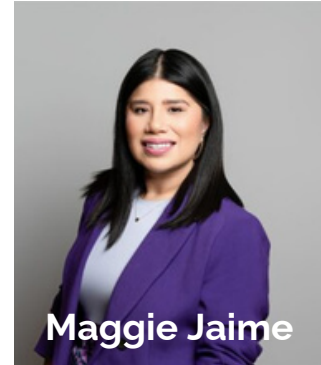
Table of Contents

03	Letter from Executive Director
04	Community Impact
08	Two-Generation Approach <ul style="list-style-type: none">• Parent-Child Education Program
10	Postsecondary Education & Workforce Development <ul style="list-style-type: none">• AVANCE to College
12	Leadership and Family Supports <ul style="list-style-type: none">• <i>Mamas Avanzando</i> Alumni Program• Career Navigation• Early Literacy & Nutrition Summer Program
14	Programmatic Partners
15	Funding Partners
16	Financial Summary
17	Future Goals & Strategy

Letter from the Executive Director

Dear Friends of AVANCE,

Thank you for being part of the AVANCE community. This year, your support helped us reach more families than ever before—strengthening early childhood outcomes, expanding access to education, and reinforcing the belief that parents are their children's first and most important teachers.



Together, we celebrated meaningful milestones, including our largest Parent-Child Education Program (PCEP) cohort to date and continued growth in AVANCE to College (A2C). Through strong partnerships and program enhancements—such as expanded virtual services and increased digital access—we met families where they are and responded to their evolving needs.

As we look ahead, AVANCE remains committed to expanding our reach, advancing equity, and deepening the impact of our programs. We are grateful to our families, educators, partners, board members, and funders who make this work possible. Thank you for helping build brighter futures—together.

Mil gracias,
Maggie Jaime
Executive Director

Mission and Vision

Mission

AVANCE walks alongside children and families to achieve social & economic justice.

Vision

We envision a world where all children and families have equitable access to resources and opportunities to reach their fullest potential, transforming the communities in which we live.

Community Impact



Maria and J



Meet Maria & J

Maria shared, "AVANCE-Austin was my son's first experience in a school environment.

The first few months were challenging, as he took time to adapt to the classroom setting.

However, thanks to the work of his Toddler teachers, the parenting classes, and the effort I put in at home, my son has made a huge leap and he was accepted into Pre-K."

Maria sent us these photos of her son arriving happily at his new school — without crying, able to follow instructions, and eager to begin his classroom routine.

Community Impact

Meet Ingrid and G

When G first joined our program, he faced intense anxiety that often caused him to regurgitate upon arrival. His mother, Ingrid, was also navigating profound personal loss but continued to show up each day with courage and determination.

With the support of our ECE staff, Parent Educator, and Home Visitor, the family found a safe, welcoming space where they could take each step at their own pace.

Through routine development screenings, G was referred to Early Childhood Intervention (ECI), where he was later diagnosed with Autism. Our team worked closely with his mother to implement certain strategies that supported his sensory needs, including wearing some noise-canceling headphones and utilizing weighted blankets, while ensuring she never felt alone in the process.



AVANCE staff members

Over time, G began to gain confidence, build new routines, and participate more fully in classroom activities. Ingrid also found community within AVANCE—a place where she felt supported, understood, and encouraged. We are proud to share that Gael successfully graduated from our program, carrying with him the tools and confidence to thrive in his next learning environment.

Community Impact

Meet Nirvana and M

Nirvana and her daughter M. joined AVANCE as they were settling into life in Austin, navigating new routines and adjusting to a new community.

M. entered the Young Toddlers classroom with developmental delays in walking and verbal communication, and her adjustment took time as she worked through significant separation anxiety.

From the moment they enrolled, it was clear that Nirvana was deeply committed to supporting her daughter's growth and willing to engage fully in every learning opportunity.

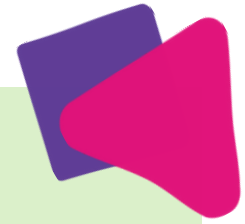
With guidance from her Early Childhood Educators and active participation in the *Peque y Yo* class, Nirvana consistently applied strategies she learned in the classroom at home.

After M was given a developmental evaluation, she was referred for specialized therapies, and our team collaborated with the family to implement an individualized plan that focused on gross motor skills, problem-solving, communication, and social-emotional development.

By March 2025, M. had made tremendous progress — beginning to walk with support, feeding herself, using her first words, and engaging warmly with classmates.

As M's confidence grew, Nirvana expanded her own support system by building connections with other AVANCE families, creating new opportunities for M. to socialize and strengthening their sense of community in Austin.

Nirvana also overcame personal challenges, including her fear of driving, motivated by her desire to fully participate in the program.




Community Impact


About Us

AVANCE-Austin partners with families through culturally responsive programming that combines education for caregivers and their young children with wraparound services to support whole family stability and success.

Our Programs Include:



Two-Generation Approach
Parent-Child Education Program (PCEP)



Postsecondary Education & Workforce Development
AVANCE to College (A2C)



Leadership & Family Supports
Mamas Avanzado (Alumni), Career Navigation, & Early Literacy & Nutrition

Theory of Change

By offering a two-generation culturally and linguistically responsive approach to learning, we will expose caregivers to the possibilities and opportunities offered by postsecondary education, workforce development, and leadership skills.

Accelerated outcomes in the Social Determinants of Health will occur resulting in greater economic and social justice for under-resourced Latino/a communities.

Outcomes in the Social Determinants of Health Include:

- Economic Stability
- Education Access & Quality
- Social Community & Context

Outcomes for Caregivers Include:

- Access to economic & social resources
- Established bonding & relationships
- Increased engagement in their children's learning
- Increased knowledge & self confidence in intergenerational economic mobility
- Increased parenting knowledge & self-confidence in parenting
- Increased levels of educational attainment, financial stability & asset creation
- Increased leadership in the home & community



Two-Generation Approach



Parent-Child Education Program (PCEP)

ABOUT PCEP

Families participate in our PCEP weekly from September through May. Classes include child-focused development sessions and caregiver-focused education sessions consisting of:

- Brain Building,
- Toy Making,
- Resource Access, and
- Parenting.

During the nine months, caregivers also have access to child development screenings, monthly home visits, and career navigation resources. Through PCEP, families establish a foundation for success both inside and outside of the classroom.

WALKING ALONGSIDE FAMILIES



This year, our **PCEP reached 808 individuals** — 382 caregivers and 426 children— *our largest cohort to date.*

Families engaged deeply in early learning, parenting support, and community-building activities that strengthen long-term educational outcomes.

To better meet families where they are, **we expanded the virtual version of PCEP** and invested in new supports that remove digital barriers to participation.

AVANCE educators were trained and certified as Digital Navigators, equipping them to help families use digital learning tools with their children and access essential online resources — from educational platforms to health care and basic needs services.


These improvements helped more families fully participate in PCEP, regardless of their schedules, transportation challenges, digital literacy levels, or any other barriers.


PCEP Outcomes




PCEP's model is education- and family-centered and rooted in the belief that parents are their children's first and most important teachers.

Our evaluation results demonstrated PCEP's significant impact on preparing families for kindergarten, improving science-based positive parenting practices, and creating positive home environments where children thrive:

 **89%** of children were screened for developmental delays and had plans created to improve any delays shown.

 **89%** of caregivers demonstrated an increase in knowledge of their child's development and school readiness.

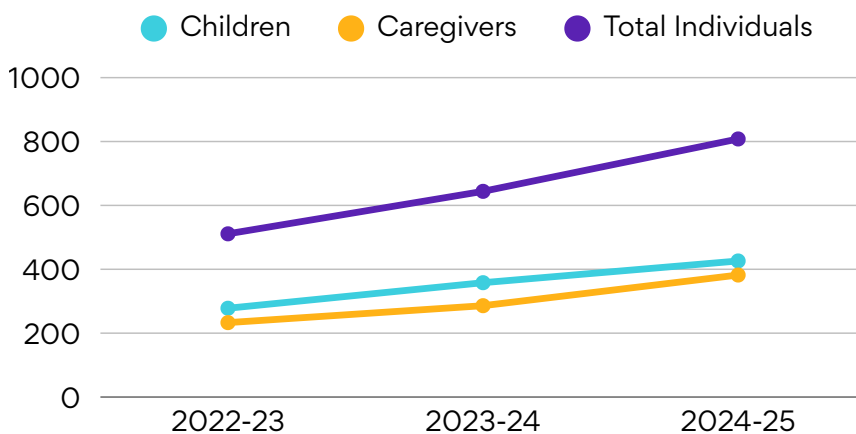
 **100%** of caregivers reported reading to their child(ren) weekly



PCEP Outreach

Over the past 3 years, we have significantly increased our reach to families who need our services.

This year, we formed a new partnership with Manor ISD to open a 3rd site of classrooms to further our reach.



Postsecondary Education & Workforce Development



AVANCE to College (A2C)

ABOUT A2C

AVANCE to College (A2C) is one of our newest programs designed to provide AVANCE parents with the opportunity to explore their next steps in their economic mobility journey.

Launched in Austin in 2023, in partnership with Austin Community College (ACC), A2C exposes low-income caregivers to postsecondary education and workforce development, accelerating their ability to pursue professional goals. A2C offers a comprehensive introduction to U.S. higher education and ACC's resources, supplemented by PCEP's wraparound services like monthly home visits, Spanish-language educators, and childcare.

WALKING ALONGSIDE FAMILIES



In its pilot year, **31 caregivers** graduated in May 2024 and 75% of them were on track to complete their GED classes, micro-credentials, and more.

In 2024, the program expanded to serve **43 caregivers**. We added A2C to a second campus, the Northridge campus, and a second instructor was also hired to support program growth. Due to the positive impact of the program and the increase in participant enrollment, Austin Community College also established its own AVANCE to College Coordinator position.

A2C offers a safe and encouraging space where student parents can grow their parenting skills, learn to advocate for themselves, manage their time, and develop goals for themselves and for their family.

By implementing A2C on a college campus, parents gain familiarity with the institution, learn and discover the opportunities and resources available to support their educational journey, and form connections with college staff and students.

A2C Outcomes



Through a partnership with local community colleges, AVANCE to College is offered as a non-credit bearing course so that when caregivers enroll in the program, they become registered college students. Over the course of nine months, student parents attend weekly sessions on campus, showing gains, such as:



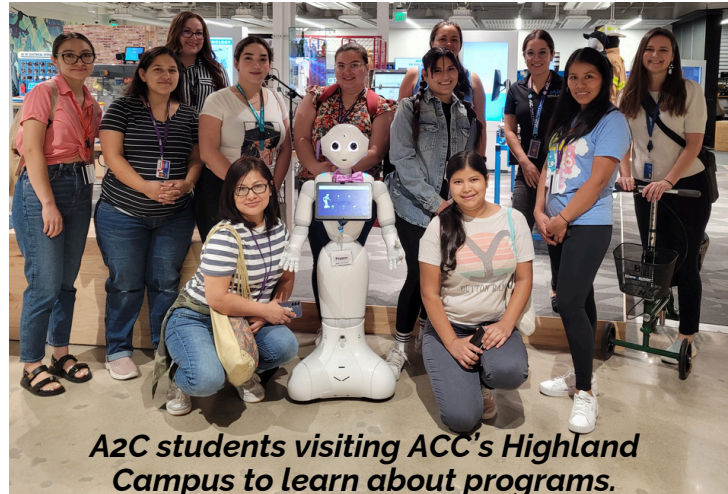
97% of graduates were enrolled in education courses and/or a workforce program shortly after graduation



86% of caregivers demonstrated an increase in positive parent-child interactions



72% of caregivers demonstrated an increase in parent empowerment



A2C students visiting ACC's Highland Campus to learn about programs.

A2C Success

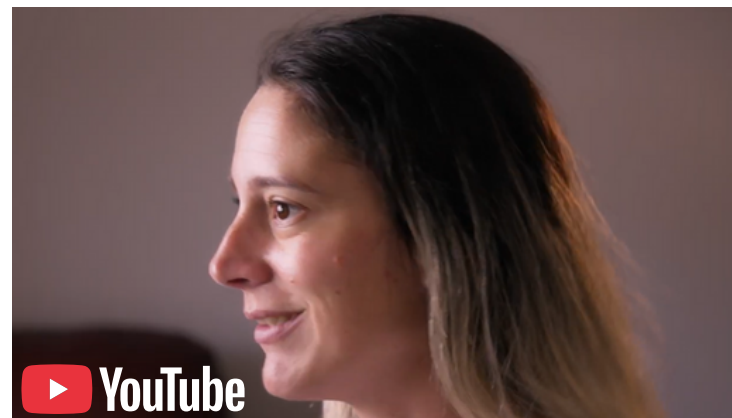


This past October, we honored Laura Valle as our “Mother of the Year” during our 2025 Valor y Sueños Luncheon.

Laura, a mother and shining example of resilience, first came to AVANCE-Austin, looking to rebuild her life and create a brighter future for her children.

She had big dreams, but like many other mothers, faced barriers—especially the high cost of childcare, which made working and going back to school feel out of reach.

Then she heard about a new program that sounded too good to be true: AVANCE to College (A2C). College classes and free childcare? But Laura took a leap. She didn't look back. Click below to hear her personal story.



Leadership & Family Supports

Mamas Avanzando

ABOUT THE ALUMNI GROUP

The *Mamas Avanzando* alumni group was developed in response to families requesting additional resources beyond PCEP, especially those that help to further their individual development, parenting skills, and pathways to employment. Information sessions cover a broad array of topics: civic engagement, stress management, leadership training and development, and parenting.

163 individuals were served through 2024-2025. Individual workshops were offered every other month (Mini Major Day at ACC, Know Your Rights Trainings, Digital Equity Event and Basic Computer Training, Mental Health, and Avanzado a la Carrera).

Career Navigation

ABOUT CAREER NAVIGATION

Career Navigation offers caregivers one-on-one support and coaching to navigate the job search,



higher education, and vocational program enrollment processes.

75 individuals were served through 2024-2025. 51 individuals enrolled in GED classes, Teacher Certification, Interpretation Certification, and ESL classes. Other individuals received application assistance for FAFSA, TSFSA, new jobs.

WALKING ALONGSIDE FAMILIES



Digital inclusion is transforming the lives of AVANCE families, giving parents the tools they need to access resources, support their children's education, and prepare them for school success.

Through partnerships with DigitalLIFT, NTEN, and Human-I-T, we distributed 370 laptops and 50 WiFi hotspots, and provided one-on-one and group digital literacy training through Digital Navigation.

Early Literacy and Nutrition (Summer Program)



ABOUT THE SUMMER PROGRAM

AVANCE-Austin collaborates with H-E-B to provide an interactive six-week summer program. This program actively educates parents with interactive lessons on reading, health, and nutrition, all in a fun and engaging family-centered approach.

Families discover that nurturing a child's body and mind fosters their growth and development. It includes recipe demonstrations, and also free food, books, backpacks, and t-shirts for children.



SUMMER PROGRAM OUTCOMES

This year, our Summer Program reached **186 individuals**—90 caregivers and 96 children. We partnered with community clinics to offer an easily accessible program. This partnership also allowed for seamless referrals for healthcare services.



80% of graduated parents reported reading to their child three times a week or more

A PROGRAM SNACK RECIPE Apple Turkey Wraps

YOU WILL NEED:

- 1 pkg. Whole Wheat Tortillas
- 1 pkg. Cream Cheese
- 1 pkg. Turkey Lunch Meat
- 1 bag Baby Spinach leaves
- 2 Green Apples



DIRECTIONS:

1. Heat Tortilla in microwave to warm or serve cold.
2. Cut apple into about 8-10 slices.
3. Spread 1-2 Tablespoons of cream cheese onto tortilla.
4. Place 1 slice of turkey, 5 spinach leaves, and 3 slices of apple onto tortilla with cream cheese.
5. Roll up and enjoy!

Programmatic Partners

We value the ongoing support of our 40+ operating partners whose commitment to our mission, vision, and growth allows us to build and sustain solid relationships with the broader community. Below is a partial list of our current partner agencies. A complete listing can be found on our website at www.avanceaustin.org.

INDEPENDENT SCHOOL DISTRICTS

Austin, Pflugerville, and Manor ISD provide in-kind space for our programs, assist families with Pre-K enrollment, and connect us with other relevant agencies to provide referrals and added support for families.

COMMUNITY COLLEGE

Austin Community College collaborates on development, registration, and delivery for ESL and AVANCE to College programs.

CHILDRENS MUSEUM

Thinkery provides AVANCE families reduced-cost membership opportunities and collaborates to provide educational activities in celebration of Dia Del Niño.

PUBLIC LIBRARIES

Austin, Pflugerville, and Manor library staff present general information during AVANCE's resource speaker series, and follow up with a special class providing in depth training for parents on how to read to their children. AVANCE-Austin then provides hands-on learning by taking families to the public library, where library representatives lead tours of their facilities. AVANCE educators also host Peque y Yo classes at their facilities.

COLLABORATIONS

AVANCE-Austin is a part of Austin's Ready Families Collaborative, United Way's Success by Six and 2-Gen Initiatives, University of Texas' Whole Communities, Whole Health Collaborative, Seek Common Ground - Immigration is American Collaboration Network (IACN), and El Buen Samaritano's Cradle to Contributor Collective. We provide data and share program information to partners to create a network of services.

Funding Partners

The success of our programs is made possible by a larger community commitment to invest in Central Texas families. We deeply appreciate every donation made to our organization. Below is a list of our leading supporters over the past year:

INVESTORS

Foundations, Corporations, and Local Government Grants

AlertMedia
Anonymous
Applied Materials
Ascension Seton
Austin Community Foundation
AVANCE, Inc.
Buena Vista Foundation
CapMetro
Children's Defense Fund
City of Austin
Donald D. Hammill Foundation
El Buen Samaritano
Enterprise Mobility
Episcopal Health Foundation
Glimmer Austin
Google Fiber
H-E-B
Hispanic Impact Fund
Methodist Healthcare Ministries
Moody M-Pact Fund
Montandon Foundation
Omarin Life
Rachel's Plan Bee
Shield-Ayres Foundation
St. David's Foundation
Target
Texas Mutual
The Lola Write Foundation
The Long Foundation
The Lowe Foundation
The Powell Foundation
The Rosendin Foundation
Topfer Family Foundation
Travis County
United Way
Well's Fargo Bank

Individuals

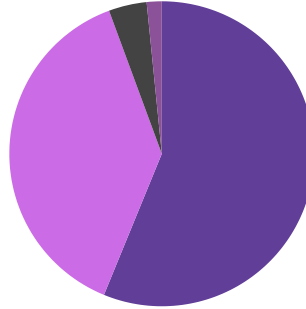
Anna Lisa Williford
Anne Drescher
Anonymous
Anurita Mitra
Barbara Frandsen
Belinda Arambula
Catherine Haltom
Cathy Doggett
Cindy Aguas
Chris Harte
David Miller
Dana and Crutch Crutchfield
Dr. Rosamaria Murillo
Edgar Saucedo
Elizabeth Heard
Elizabeth Faulk
Eleanor Whitney
Elma and James Aldrete
Gail Dainton
Garry Mauro
Griffith Family Foundation
Haley Greer
Hector Hernandez
Ivette & David
Smythe-Macaulay
Jorge Padilla
Jesús Aguirre
Kara Kockleman
Karlen Gross
Katherine Bailey
Kelly Crook
Kristina Watson
Laura Flores Gentner
Lisa Doggett
Lisa Walker
Lulu Pelcastre
Maria Cantú Hexsel
Marili Burbes
Marilyn Halpin
Marla Sekel
McElvaney
Family Foundation
Melissa Aguas
Melissa Jones
Michael De Leon
Michelle Apodaca
Monica Liang-Aguirre
Nadia Barbot
Nancy Carrasco
Nelson Sanz
Omar Barnhart
Robert Green
Samantha Lopez
Saul Jaime
Sean Hale
Sherry Sniderman
Stephanie De Leon
Stephen and Cynthia Smith
Vanessa Santamaria
Dainton

Financial Summary

AVANCE-Austin maintained strong financial health with increased assets year-over-year.

Revenue

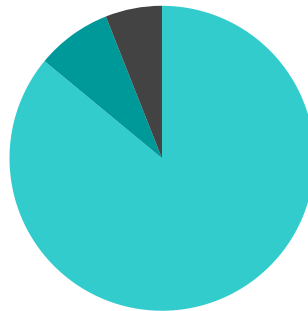
- Non-Federal Grants - \$1,690,500
- Interagency - \$1,148,636
- Individuals - \$121,378
- Interest and Dividends - \$47,837
- *Total - \$3,008,351**



**Includes multi-year grants contracted for FY26, recognized per GAAP rules. Interagency includes multi-year funding from the Moody M-Pact Fund to support PCEP expansion projects across the AVANCE network.*

Expenses

- Personnel - \$1,783,165
- Professional Fees - \$145,048
- Supplies - \$45,795
- Occupancy - \$52,219
- Travel - \$13,070
- Other - \$184,378
- Total - \$2,223,675**



- Program - 86%
- Administration - 6%
- Fundraising - 8%

Assets and Liabilities

As of 6/30/2025

- Total Assets - \$4,154,004
- Total Liabilities - \$76,341
- Total Liabilities & Assets- \$4,154,0045**

As of 6/30/2024

- Total Assets - \$3,344,590
- Total Liabilities - \$51,603
- Total Liabilities & Assets- \$3,344,590**

Future Goals & Strategy

In 2024, AVANCE launched a multiyear strategic plan, grounded in our mission and decades of community-centered work. The plan focuses on three principles:

01.

Strengthening our Internal Culture and Organizational Health

We are investing in our staff and leadership to ensure 75% of AVANCE team members are from diverse communities, with a particular focus on the communities we serve. We are also making strides to ensure that our compensation remains competitive and equitable.

02.

Expanding the Reach and Impact of Core Programs

We are growing PCEP and A2C within Central Texas to serve more families. We are also incorporating a brand new two-generation pedagogy for A2C.



03.

Increasing AVANCE's Influence in Early Childhood Education

We are including the voices and lived experiences of Latino communities to share the impact of AVANCE's mission and make meaningful change in Central Texas. We are also uplifting all staff voices to share expertise with local early childhood educators.



Thank You!

Contact Us:

☎ (512) 414-6127

✉ avance-austin@avance.org

🌐 www.avanceaustin.org

📍 PO Box 19105, Austin, TX 78760

Austin
AVANCE[®]